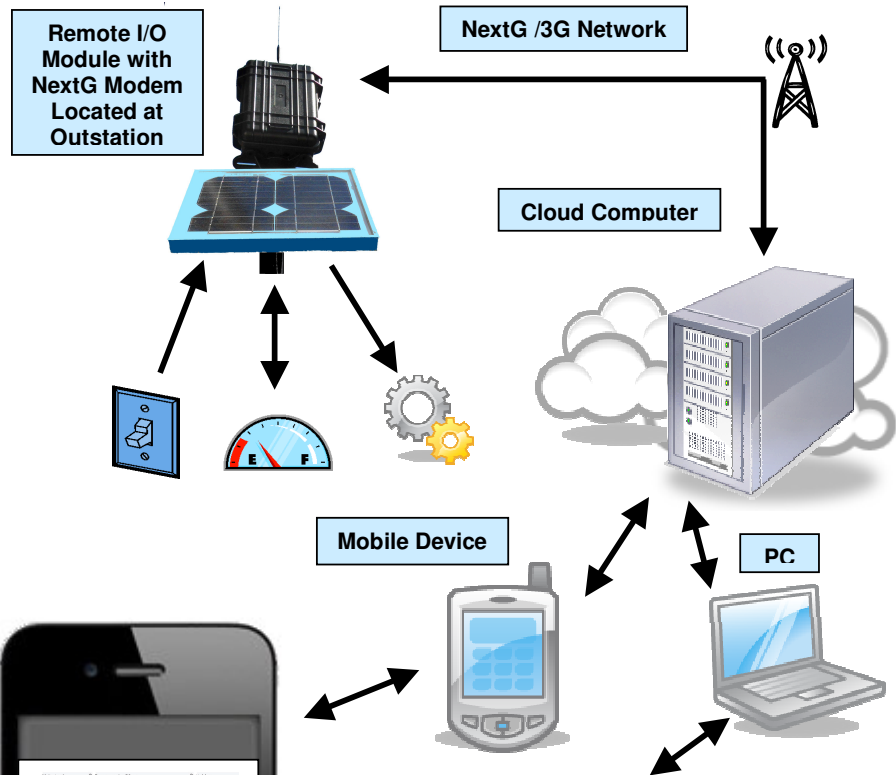


Product Features

- Web-based monitoring of multiple sensors, including water level, flow volume, electric fence status, soil moisture, temperature, rainfall, wind speed etc.
- Digital output control of pumps, motors, relays etc in real time using PC or smart phone.
- Can be solar powered or 240V AC.
- Alarm points can be set for any measured parameter and e-mails sent to user-defined addresses.
- Requires only an annual subscription to a phone company for a suitable SIM card data package, i.e. no other ongoing maintenance fees.
- Easily add and modify equipment to be monitored.
- Standard analog, digital and pulse inputs measured directly without any skills required.
- Serial data input from any apparatus.
- View historical data graphically on screen with values updated every 10 minutes.
- View real time data updated every 10 seconds
- Download data logged at 10 minute intervals over last 30 days in Excel spreadsheet format
- On-screen switches enabling on/off function control.
- Logical functions with rules allow relays to be controlled automatically by linking parameters to set points.
- Web camera interface also possible.

Remote monitoring and control over the Internet at any location with NextG /3G coverage.

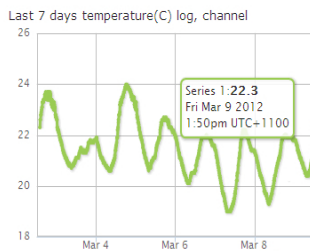


iPhone, Android and PC-compatible user interface

Remote Telemetry and Control

NextG Remote Monitoring at Outstation A

1. Move the cursor over each graph to display numerical values for the 3 channels.
2. Refresh the screen to update graphs.
3. As of 23rd Dec only the temperature is a measured real value, others are artificial sensor inputs for illustrative purposes only.



The time and date at your computer's location is: 09 March 2012 13:50:28.
The time zone offset between local time and GMT is -660 minutes.
The time and date (GMT) is: Fri, 9 Mar 2012 02:50:28 UTC.

Current Temperature



Real-time test data on channel 4

Temperature (T), Rainfall last 24 hrs (R), Soil Moisture (SM), Humidity(H), pH (PH), Angle (AN)

Electrosense Technologies Pty. Ltd.

ABN: 86 106 314 676

Postal: PO Box 948
Templestowe, Vic 3106 Australia

Physical: 5a Hartnett Cls,
Mulgrave, Vic 3170 Australia

Ph: 03 98461510
Mob: 0407461518
Fax: 03 98465046
Int: +61 3 98461510

info@electrosense.com.au
www.electrosense.com.au

- Seamless connection to your remote station enabling continuous real-time monitoring and control of equipment in isolated rural, industrial, scientific and domestic situations.
- Simple to install and easily maintained by anyone with basic computer skills.
- The most cost effective way to web-enable your devices, with only wireless access to the Internet required.